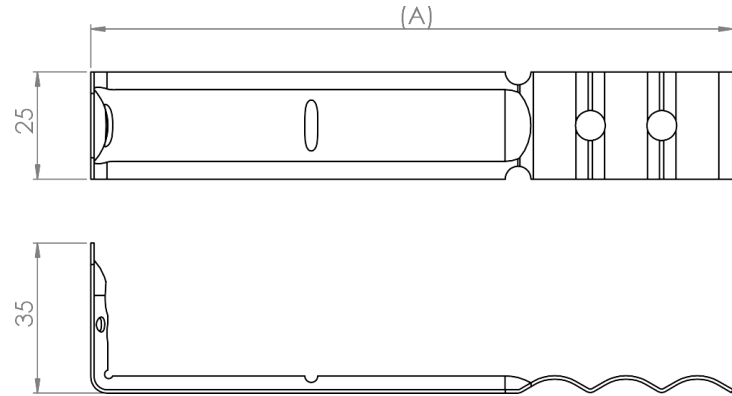
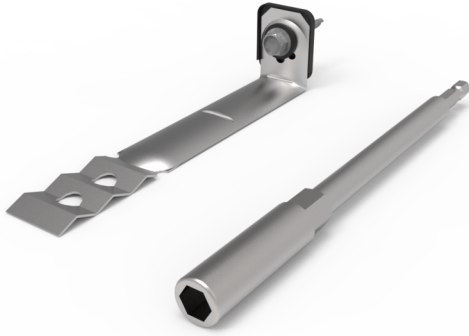


Isolation Thermal Break Medium Duty Veneer Wall Tie



DESCRIPTION

Isolation and thermal break washer face fix medium duty veneer wall tie, Type A

FEATURES

- Isolated tie so you can benefit from using a Stainless tie with a Galvanised screw and frame
- Thermally broken to create an insulated barrier
- Quicker to deploy with included driver
- Screw fastener for a faster installation time, less frame loosening
- C4 Rated multi purpose screw
- Greater fastener tensile load
- Clay brick / block work
- Multiple fixing application for different substrates
- Max cavity 75mm
- Universal applications
- Australian design & tested AS/NZS 2699.1:2020

FIXINGS

- Material: Metal, Fastener: S/Drilling hex head 10g X 25mm galvanised class 3 finished
- Material: Metal / Timber, Fastener: Cerra Multipurpose Screw hex head 10g X 35mm
- Material: , Fastener: For more information contact us with your project requirements.

CORROSION

- Material: Stainless steel 316L (R4)

ADDITIONAL CORROSION

Conforms to corrosion resistance set by AS/NZS 2699 / AS 3700.

ORDERING INFORMATION

When ordering please supply use with the part number and quantity you require

CGT12-ITB	-100
PRODUCT CODE	SIZES (A)
	100
	125
	150
	175
	200



Datasheet



Isolation Thermal Break Medium Duty Veneer Wall Tie

TESTING INFORMATION

CGT12-ITB 125mm

AS/NZS 2699.1:2020	CGT12-ITB 125mm (75mm Gap)
	Mean (range)
Tested in Compression - Mean Load (kN)	1.30 (0.95 – 1.87)
Tested in Tension - Mean Load (kN)	0.69 (0.63 – 0.74)